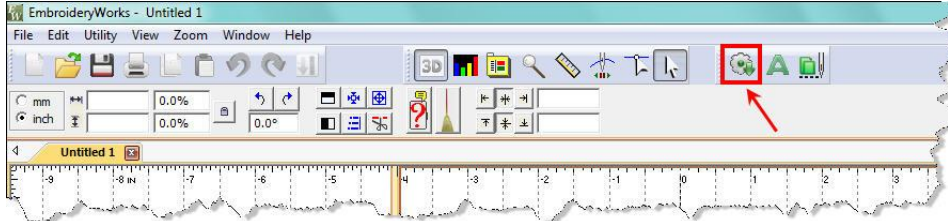


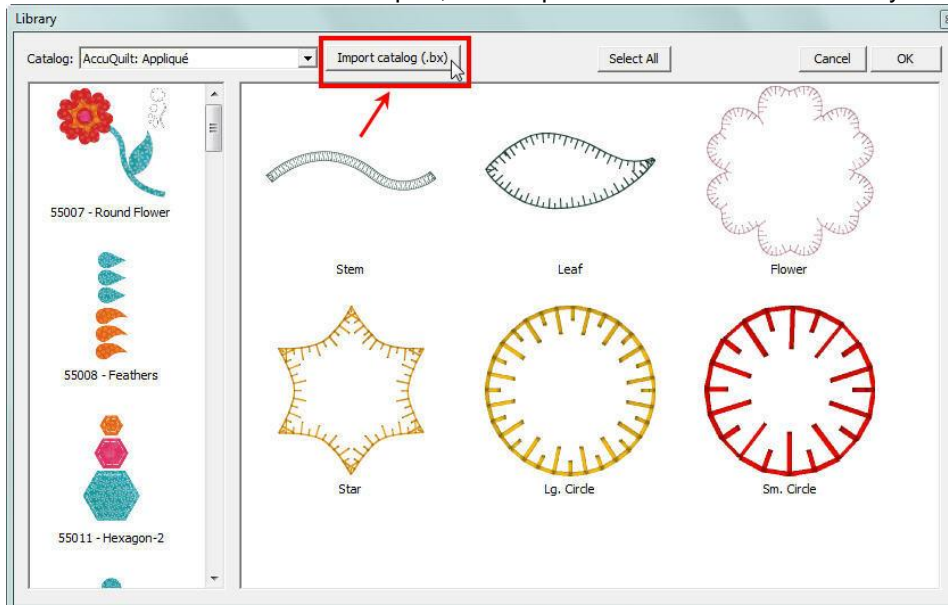
Instructions for Installing AccuQuilt Shape Library

Over 100 shapes from the families of the AccuQuilt dies have been made available as embroidery applique files in the library function of EmbroideryWorks.

- Then, open your EmbroideryWorks program.
- Click the Merge Design button to open the EW Library.



- Use the button "Import catalog (.bx)" button to load the individual catalogs.
- The files to import will be found in the AccuQuilt Shapes folder which was included in the update download.
- Select the file and click open, the shapes will be added to the library.



Note: If you prefer, you can double click on the downloaded .bx file to launch the install for the files. When the installation is complete, your EmbroideryWorks program will launch, ready for you to begin creating.